

SYCAMORE BUCYRUS AREA IMPROVEMENTS PROJECT



Welcome! Thank you for visiting our virtual open house to learn more about the Sycamore-Bucyrus Area Improvements Project. The virtual open house includes details that provide key updates as the project has progressed. We welcome your feedback via telephone, email, or the comment box that can be found at the bottom of the project web page.

The virtual open house includes details on the following information:

- How the system works
- Project Need & Benefits
- Project Schedule
- Typical Structure
- Right-of-Way

PROJECT NEED & BENEFITS



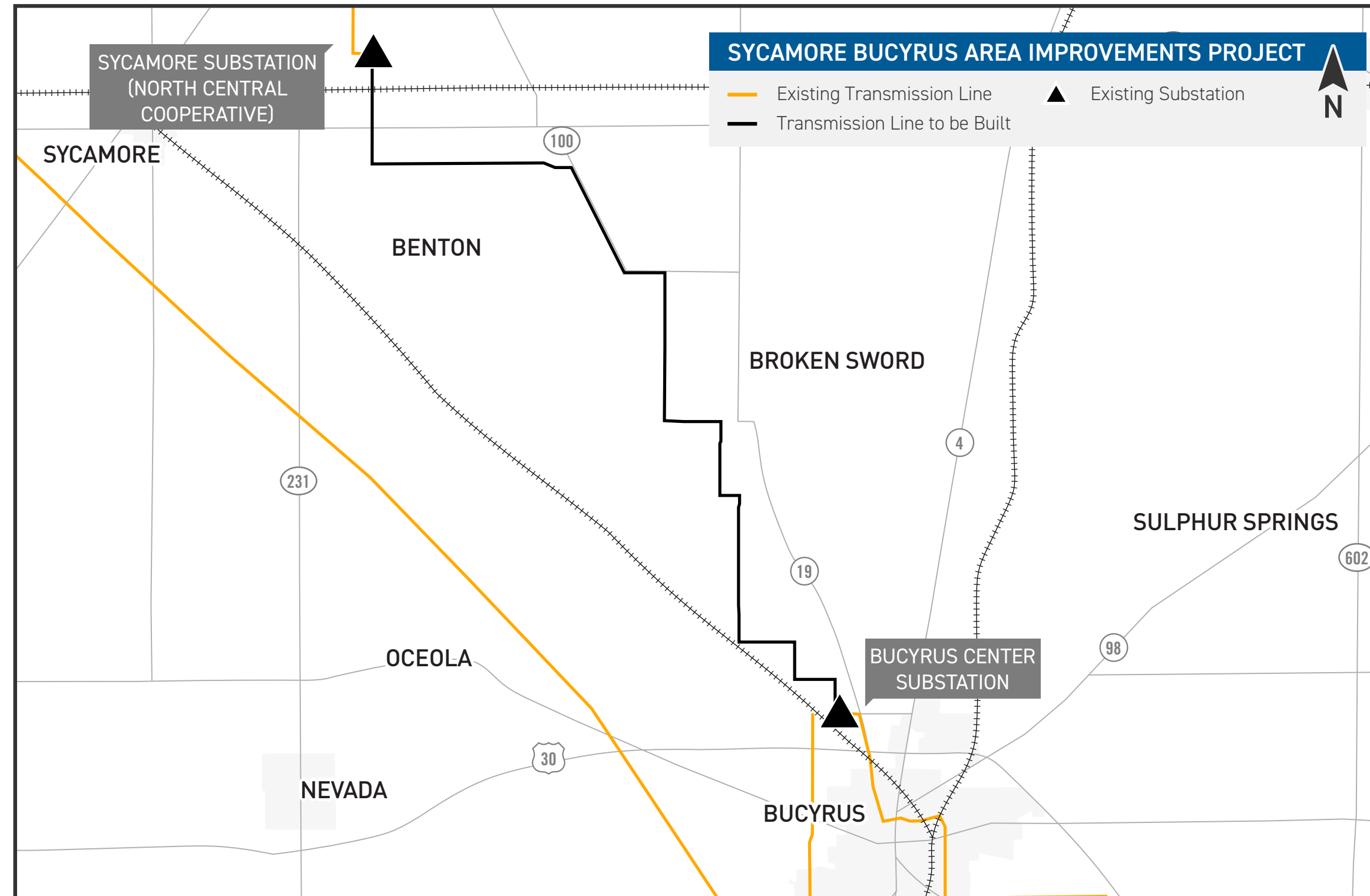
Why is the project important to our community?

The area currently receives electricity from a single power line with wooden poles from the 1950s. The existing line has experienced a large number of power outages in the last five years.

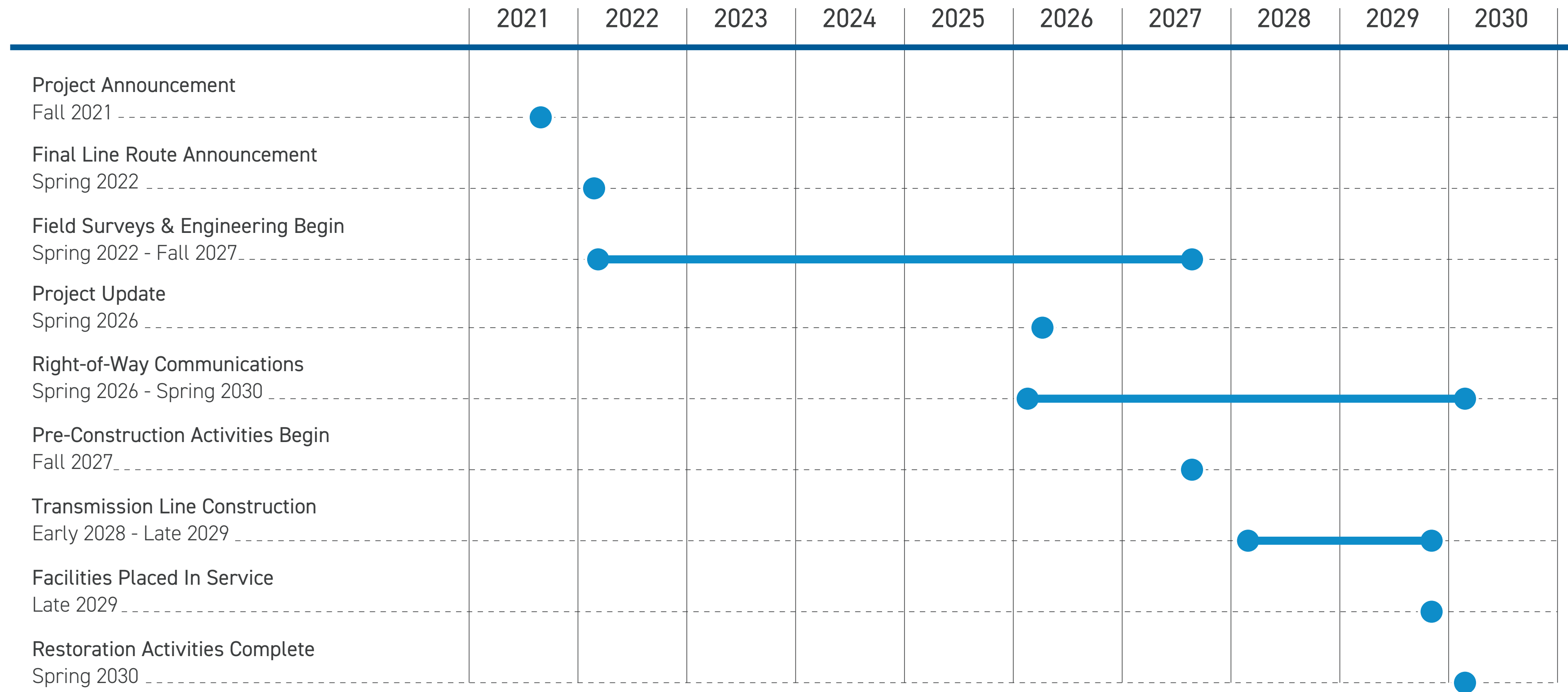
Building a new power line creates a second source of electricity. In the event a line experiences an outage, the other line can continue to serve customers.

A stronger transmission grid benefits the local distribution companies and electric cooperatives, such as North Central Cooperative, who receive power from the transmission lines.

PROJECT MAP



PROJECT TIMELINE



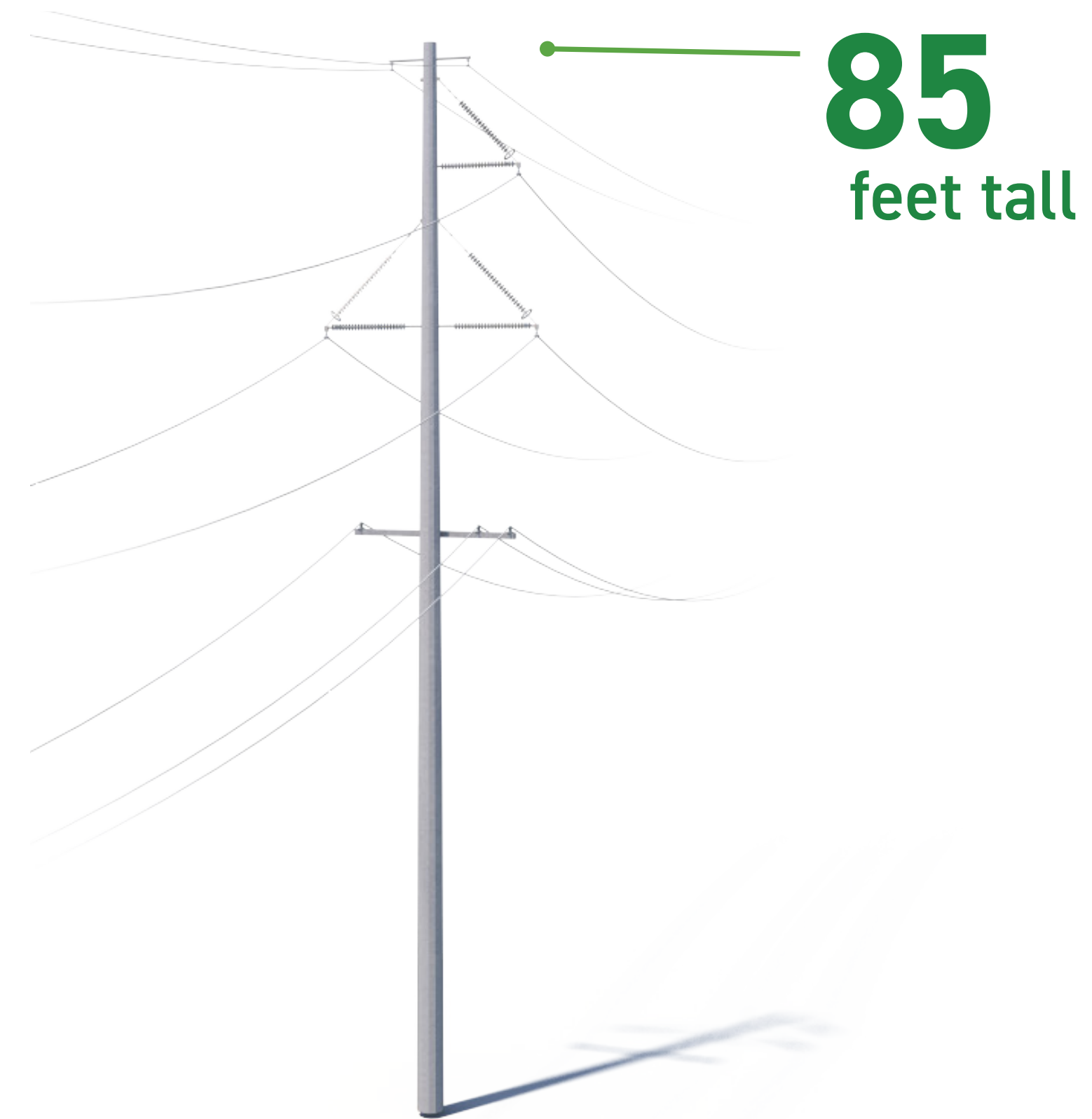
**Timeline subject to change.*

TYPICAL STRUCTURE

The project involves the use of single steel poles.

Structure Height: Approximately 85 feet*
Right-of-Way Width: 60 feet*

**Exact structure, height, and right-of-way requirements may vary.*



RIGHT-OF-WAY ACTIVITIES



We have two key philosophies regarding power line rights-of-way:

1. Routes should minimize disturbance to the community and the environment.
2. Property owners should be fairly compensated for any acquired land rights.



Once we study the land and propose line routes, we reach out to landowners for the following:

To obtain permission to access your property for activities such as:

- Environmental assessments
- Appraisal work
- Land surveying, soil boring and other field activities
- Cultural and historical resource reviews

To secure rights-of-way and communicate:

- Easement compensation
- Easement terms and conditions
- Right-of-way width

To outline our construction process with a specific focus on:

- Property access and special conditions
- Property restoration
- Damage mitigation as appropriate

WHAT TO EXPECT DURING CONSTRUCTION



Construction Corridor Development

Crews prepare for construction by:

- Building access roads.
- Marking utilities and pole locations along the power line route using stakes and flags.
- Removing obstructions from the right-of-way easement area.
- Installing safety and environmental controls such as fencing.

As part of this process, crews clear the right-of-way:

- Forestry crews prepare for transmission line construction by clearing trees and woody-stemmed vegetation from the right-of-way.
- Crews may clear identified danger trees outside the right-of-way as allowed per the easement language.

WHAT TO EXPECT DURING CONSTRUCTION



Pole Installation

At most pole locations, crews:

- Assemble the pole and place it near the installation area.
- Install and stabilize the base of the new pole.
- Install and secure the new pole.

WHAT TO EXPECT DURING CONSTRUCTION



Wire Installation

Crews install new wires on the new poles along the power line route.

WHAT TO EXPECT DURING CONSTRUCTION



Facilities Placed In Service

Crews energize the equipment after finishing pole and wire installations.

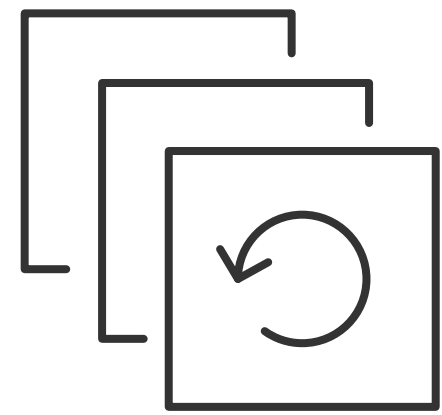
Post-Construction & Site Restoration

We restore properties to as close to their pre-construction condition as possible. Our teams work with individual landowners to address any property damage.

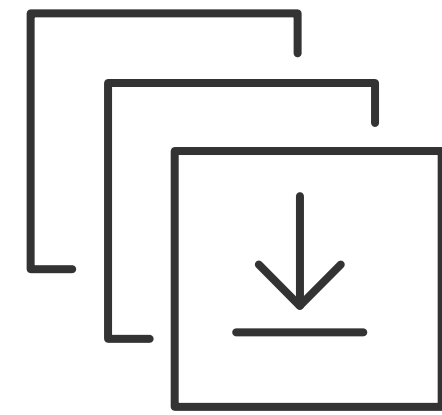
THANK YOU!



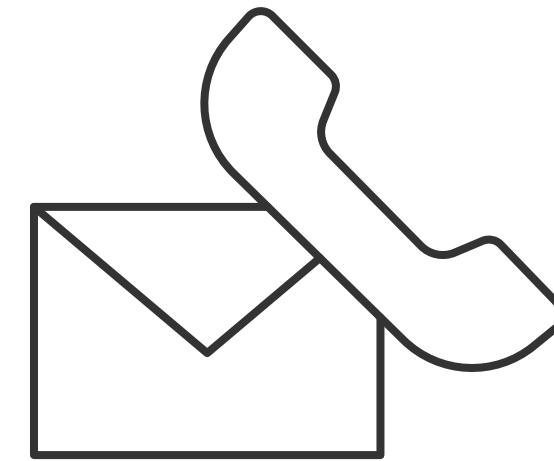
Thank you for visiting the project virtual open house. For more information and project updates please visit the project website, or contact us with any additional questions.



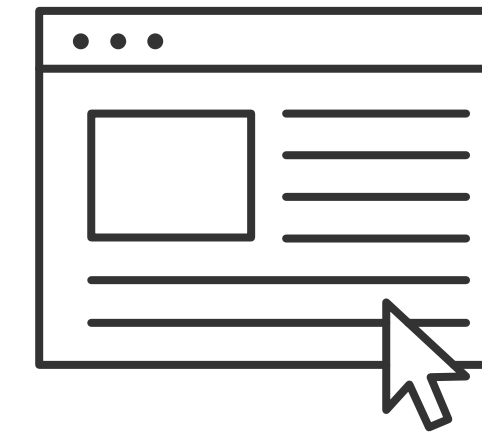
[Replay
Open House](#)



[Download
Slide Deck](#)



[Contact Us](#)



[Visit Project
Website](#)